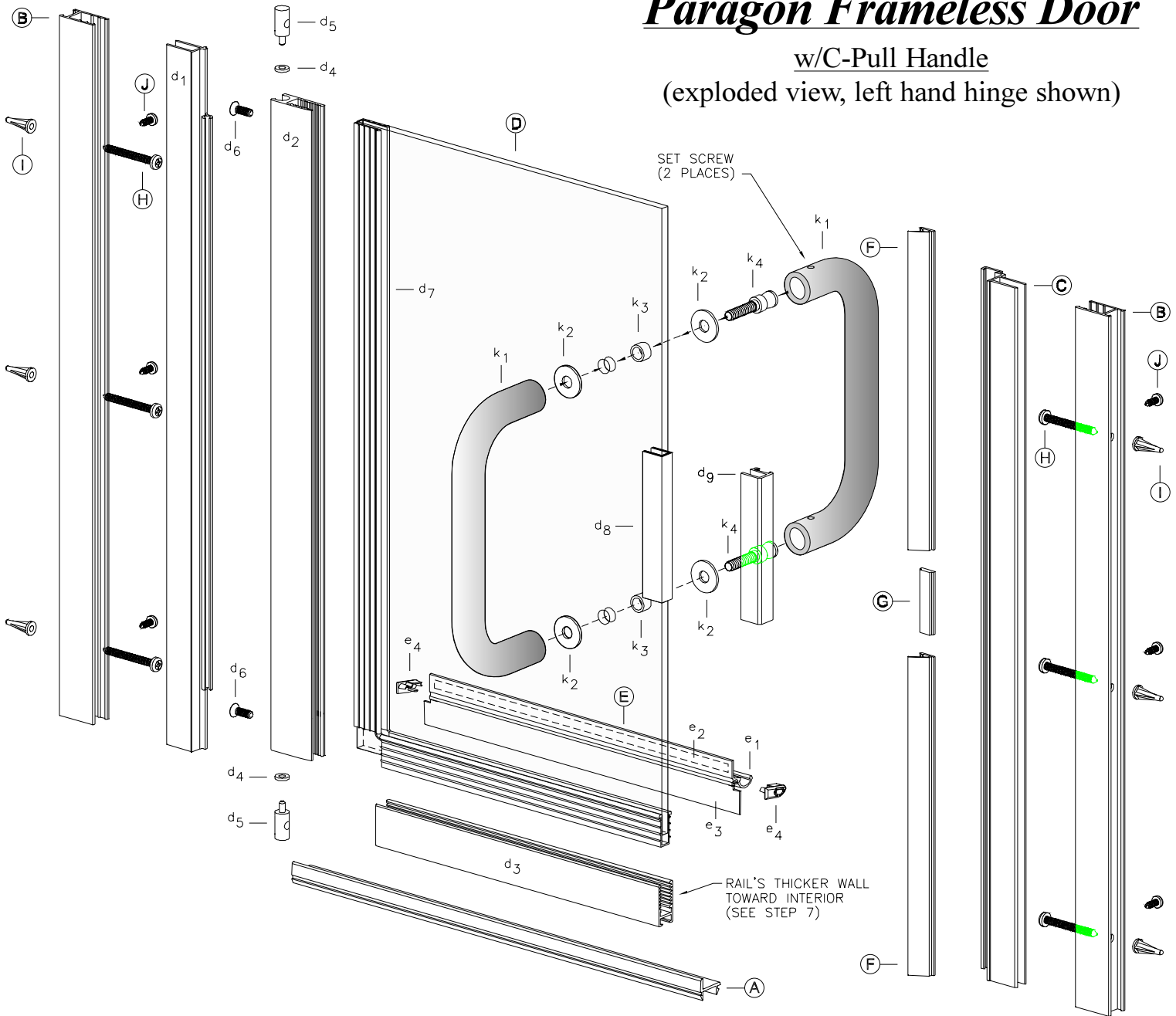


# Paragon Frameless Door

w/C-Pull Handle

(exploded view, left hand hinge shown)



(\*) denotes Vinyls used with 3/16" glass

## PART LIST OF MATERIAL

KEY LETTER	PART NUMBER	DESCRIPTION	QTY	KEY LETTER	PART NUMBER	DESCRIPTION	QTY
A	901	SILL	1	E		DRIP RAIL ASSEMBLY	
B	903	WALL JAMBS	2	e1	927	Drip Rail	1
C	928	STRIKE POST	1	e2	4403	Drip Rail Tape	1
D	----	DOOR ASSEMBLY		e3	c176g	Drip Rail Vinyl	1
d1	920	Door Hinge Post	1	e4	cp933	Drip Rail Caps Plugs (set)	1
d2	923	Door Hinge Stile	1	F	c956c	SEAL VINYL (Strike Post)	2
d3	929	Door Rail	1	G	98-45	MAGNET (Strike Post)	1
d4	cp148tw	Door Hinge Washer	2	H	6-8114PHP	INSTALLATION SCREWS	6
d5	cp932	Door Hinge Bushing	2	I	1329	PLASTIC SCREW ANCHORS	6
d6	812FHP	Door Assembly Screw	2	J	638PHPT	ADJUSTMENT SCREWS	6
* d7	c944b	Door Glazing Vinyl	---	K	T6-BGL	C-PULL ASSEMBLY	
* d8	c945b	Door Strike Vinyl	1	k1	---	Handles (set)	1
d9	931M	Door Strike	1	k2	---	Washers	4
d10	----	Door Glass, 3/16" thk	1	k3	---	Sleeve Bushing	2
				k4	---	Screws	2
Vinyls below are used with 1/4" glass							
d7	c954b	Door Glazing Vinyl	---				
d8	c955b	Door Strike Vinyl	1				

1. Measure the base opening along center of shower curb as shown in figure 1, then trim Sill (A) to 1/16" less than measurement obtained.

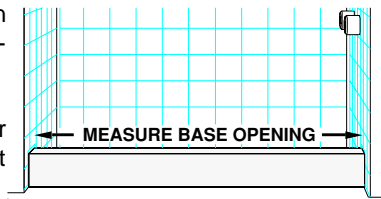


figure 1

2. With high lip toward exterior of enclosure, position Sill at center of shower curb. Temporarily tape Sill to shower curb to prevent movement.

d

3. Place Wall Jamb (B) on to ends of Sill (A) and up against shower walls as shown in figure 2. Plumb the Jamb, then pencil mark their installation holes locations on the shower walls (3 per jamb). Remove Wall Jamb. Using a 3/16" masonry bit, drill 1-1/4" deep installation holes in locations previously marked. Insert Plastic Screw Anchors (I) into holes.

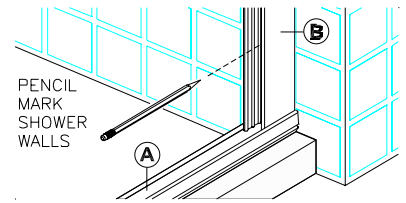


figure 2

4. Reposition Wall Jamb (B) as before and secure Jamb to walls using the six(6) 1-1/2" Installation Screws (H) provided (3 per jamb).

5. Decide from which side your Door Assembly (D) is to hinge (left or right, your choice). Install Glazing Vinyl (d7) onto hinge side of glass as shown in the exploded view. Begin glazing at top of glass edge and work down. Clip the vinyl 7/16" from bottom edge of glass (see figure 3) and continue glazing bottom edge of glass as shown.

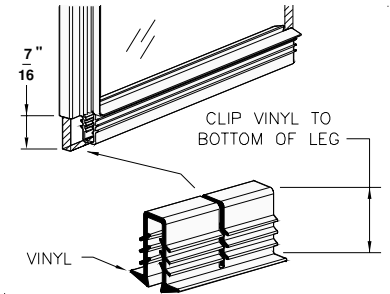


figure 3

When cutting vinyl, make cut as shown. Be careful not to cut all the way through

6. Insert the Hinge Stile (d2) over the Glazing Vinyl and tap into place (with a rubber mallet) until the Post is firmly seated (*top of Hinge Post must be flush with top of glass*).

7. Before installing Door Rail (d3), note that the rail's thicker wall is positioned toward interior of enclosure, as shown in exploded view - sheet 1. Insert the Door Rail over the bottom Glazing Vinyl and tap into place (with a rubber mallet) until the Rail is firmly seated. Rail (d3) must be butted up to the Hinge Stile (d2) when done.

8. Insert the Hinge Post (d1) into the Hinge Stile (d2) as shown in figure 4. Take a minute to check the door rotation (*is it the correct rotation for your configuration*)? If it is not, then make it so. When satisfied, proceed.

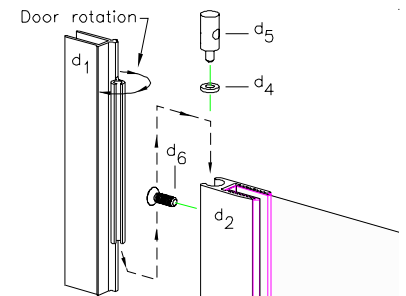


figure 4

(Door always opens in direction shown above)  
Figure shows installation for a left hand hinged door

9. Insert Hinge Washer (d4) and Hinge Bushing (d5) into Hinge Stile (d2) as shown in figure 4. Rotate Hinge Post (d1) out of the way and secure the bushing with one(1) Door Assembly Screw (d6) as shown in figure. Repeat step for opposite end.

10. Pick Door Assembly up and insert its Hinge Jamb (d1) into the Wall Jamb from which it is to swing. On strike edge of glass, center and install Door Strike Vinyl (d8) as shown in exploded view. Insert Door Strike (d9) over Vinyl (d8) and tap into place (with a rubber mallet) until Strike is firmly seated. Carefully trim any excess vinyl as required.

11. Insert Strike Post (C) into appropriate Wall Jamb. Measure from bottom of Strike Post (where it sits on Sill) to the bottom of the Door Pull. Trim bottom Seal Vinyl (F) to a 1/4" more than measurement obtained. Insert trimmed Seal Vinyl into Strike Post as indicated in exploded view. Next insert Magnet Strip (G) into Strike Post. Finally insert remaining Vinyl Seal (F) and trim top excess as required.

12. Adjust Door Assembly and Strike Post along curb as required. Note: Bottom of Door Assembly must always remain parallel to Sill in order for door to operate properly. When satisfied with door operation, secure Hinge Post and Strike Post to the Wall Jamb using 638PHPT Adjustment Screws (J), see exploded view - sheet 1.

13. Attach Drip Plugs (e4) onto Drip Rail (see exploded view - sheet 1). Clean bottom rail of door with alcohol to remove any oil. Failure to clean door rail prior to installation of Drip Rail (e1) may cause tape to release. Remove backing from tape and position Drip Rail flush with backside of Hinge Stile (d2) as shown in exploded view - sheet 1. Slightly elevate Drip Rail at strike side before securing to create a sloping effect.

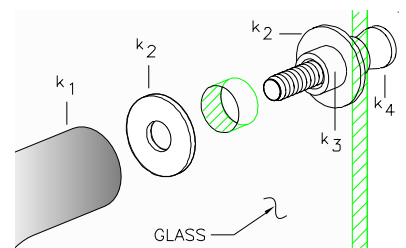


figure 5

Install C-pull Handles as shown above  
(Install outside Handle first as shown, then install the inside Handle)

14. Install C-pull Handles (K). Slip a Washer (k2) and Sleeve Bushing (k3) onto the C-pull Screw (k4) as shown in Figure 5. Insert it into the glass hole as shown and attach the outside C-pull Handle. Hand tighten the screw and repeat step for bottom portion. When done . . . carefully tighten down assembly with a screw driver. Take inside Handle (see explode view sheet 1) and inserted it onto the C-pull Screw heads as shown. Finish C-pull Handle installation by tightening down the two set screws.

15. Run a bead of clear mildew resistant caulking down the full length of each Wall Jamb **outside** where the Jamb meet the Walls. Now run a bead **outside** where the Sill meets the curb. Follow caulking manufacturer's instructions before using shower (normally 24 hours). Installation is now complete.