

FAX NO.  
(904) 641-1697

# Coastal Industries Inc.

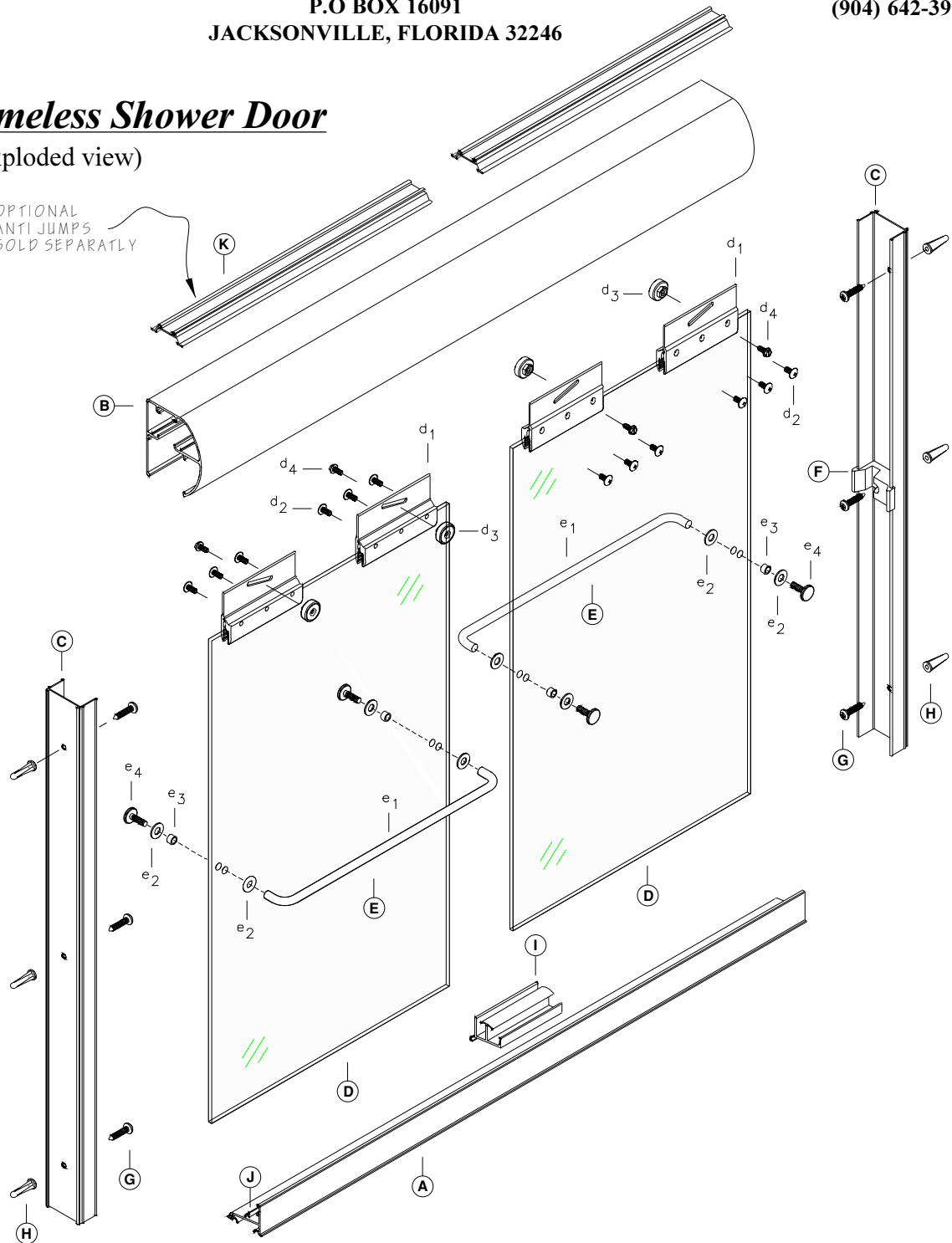
P.O BOX 16091  
JACKSONVILLE, FLORIDA 32246

TELEPHONE NO.  
(904) 642-3970

## Paragon Frameless Shower Door

(exploded view)

\* OPTIONAL  
ANTI JUMPS  
SOLD SEPARATLY



KEY LETTER	PART NUMBER	DESCRIPTION	QTY	KEY LETTER	PART NUMBER	DESCRIPTION	QTY
A	492	SILL .....	1	E	T27-BCL	TOWEL BAR ASSEMBLY .....	2
B	939	HEADER.....	1	e1	---	Towel bar .....	1
C	126	WALL JAMB.....	1	e2	---	Washers .....	4
D	---	GLASS PANEL ASSEMBLY.....	2	e3	---	Sleeve Bushings .....	2
d1	280 / 281	Hanger Bracket (installed).....	2	e4	---	Screws .....	2
d2	1012BHP	Hanger Bracket Screws (installed) .....	6	F	5170	JAMB BUMPER .....	2
d3	PN193	Nylon Roller (installed) .....	2	G	834P	INSTALLATION SCREWS .....	6
d4	832HEX	Roller Screws (installed).....	2	H	1329	PLASTIC SCREW ANCHOR .....	6
d5	C186G	Vinyl, (for brackets, installed, not shown)...	2	I	C493G	TRACK GUIDE .....	1
				J	C494G	SILL SEAL VINYL .....	1
				K	* 230	ANTI - JUMP (optional) .....	2

1. Measure the base opening along center of shower curb as shown in figure 1, then trim Sill (A) to 3/16" less than measurement obtained.

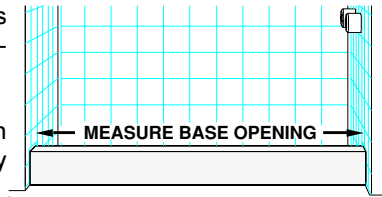


figure 1

2. Slide Sill Vinyl Seal (J) into the Sill's receiver as shown in figure 2. Run the Vinyl the full length of the Sill . . . then trim any excess.

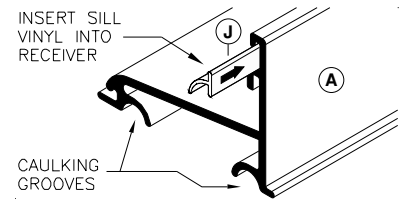


figure 2

3. To insure proper operation, Track Guide (I) must be centered on Sill (A) when installed. Located center of Sill. Apply small dab of caulking to underside of Track Guide, then snap Track Guide onto Sill as shown in figure 3.

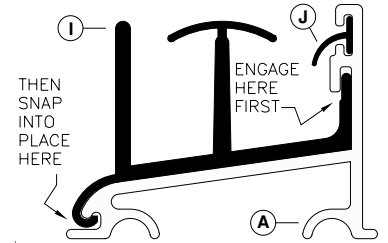


figure 3

4. Turn the Sill over and apply a bead of caulking the full length of the caulking grooves, see figure 2. With high lip toward exterior of enclosure, position Sill at center of shower curb. Temporarily tape Sill to shower curb to prevent movement.

5. Place Wall Jamb (C) on to ends of Sill (A) and up against shower walls as shown in figure 4. Plumb the Jamb, then pencil mark their installation hole locations on the shower walls (3 per jamb). Remove Wall Jamb. Using a 3/16" masonry bit, drill 1" deep installation holes in locations previously marked. Insert Plastic Screw Anchors (H) into holes.

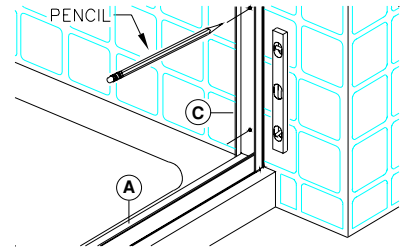


figure 4

6. Reposition Wall Jamb (C) as before. Using the top and bottom installation holes only . . . secure Jamb to walls using two(2) 834p Installation Screws (G). Do not secure Jamb at center at this time.

7. Measure the wall to wall opening at top of Wall Jamb and cut the Header (B) to 1/16" less than the measurement obtained. If model purchased comes with Anti - Jumps (K) . . . insert Anti - Jumps (K) into the Header's Anti - Jump receiver. Position and install the Header over the Wall Jamb.

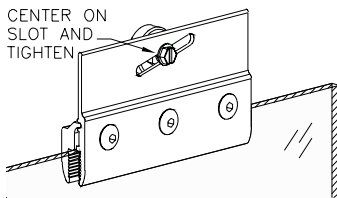


figure 5

Note:  
If you are furnishing your own glass panels for this unit . . . proceed to step 8, **now**. If the glass panels came with the unit you purchased, then the bracket assemblies (d1 thru d5) in the parts table are already installed. Center your Nylon Rollers (d3) on the Hanger Brackets and tighten down on the Rollers Screws (d4) as shown in figure 5 and proceed to step 9, **now**.

8. Attach Hanger brackets as shown in exploded view - sheet 1. Begin by draping a Bracket Vinyl (d5) over the edge of the Glass Panel. Using three(3) Bracket Screws (d2), loosely assemble the two piece hanger bracket and positioned it over the Vinyl. Position the Hanger Bracket an inch from vertical edge of glass and tighten down the screws (allen wrench required). Next install the roller as shown and tighten down on screw. Repeat step for the remaining Hanger Brackets.

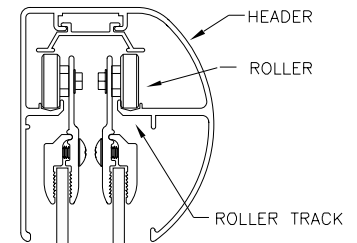


figure 6

9. While standing inside shower enclosure, install the outside Glass Panel (D) by lifting the Panel up and into the Header (B). Lower the Panel into the Track Guide (I) and engage the Rollers (d3) with the roller track as shown in figure 6.

Slide outside Door Panel into Wall Jamb located on wall **opposite of shower head** as shown in figure 7. Check Panel to make sure that it is parallel to the Wall Jamb. If it is not, remove the Door Panel and adjust the rollers either up or down by loosening the Rollers Screws and sliding the Rollers. When satisfied with outside Door Panel alignment, proceed with inside Door Panel installation.

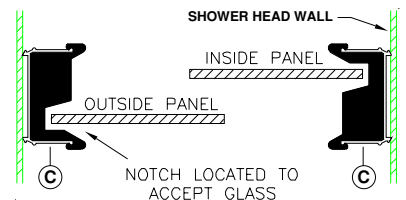


figure 7

When satisfied, slide inside Door Panel into Wall Jamb located on **shower head wall** (see figure 7) and check for alignment with Wall Jamb. Adjust Rollers as necessary.

10. Attach Jamb Bumpers (F) to Wall Jamb using an 834P Installation Screw (G). Please note that notches on bumpers are positioned so as to accept glass insertion, see figure 7.

11. Install the Towel Bars (E). Slip a Washer (e2) and Sleeve Bushing (e3) onto a Towel Bar Screw (e4) as shown in figure 8. Insert it into the glass hole as shown and attach one end of a Towel Bar (e1) to it. Attach other end of Towel Bar onto the Glass Panel. Repeat step for remaining Towel Bar.

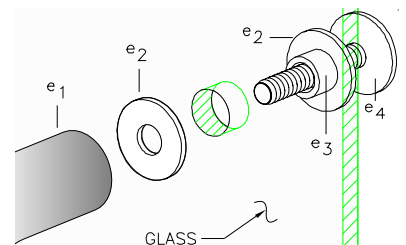


figure 8

12. Run a bead of clear mildew resistant caulking down the full length of each Wall Jamb **outside** where the Jamb meets the Walls. Now run a bead **outside** where the Sill meets the curb. Follow caulking manufacturer's instructions before using shower (normally 24 hours). Installation is now complete.